



KYTC District 3

Major Incident Detour Guide

V2 Rev. May 2015

**To notify KYTC of any incident or hazardous condition
see current D-3 IM Contact List.**

**For SAFE Patrol roadway assistance contact TOC 24/7
502-564-2080**

Objective

1. Designate and document, in advance, alternate routes and response plan
2. Implement tools to communicate plan to responders and traveling public
3. Identify agencies responsible for implementing plan

Incident Duration & Plan Implementation

For use only for complete closure of roadway with **anticipated duration >2 hrs**, OR lane closures during heavy traffic periods at discretion of KYTC and Incident Command. For incidents with anticipated duration of –

<2 hrs: Local diversion / detour only, decision & implementation responsibility of local emergency agencies responding – i.e. FD, EMA, Law Enforcement.

>2 hrs: Responsibility transitions to KYTC for implementation & maintenance of diversion / detour until roadway is at least partially reopened.

Detour route and termination is ultimately at the discretion of the Incident Command with input from KYTC based on particular incident conditions (hazmat evacuation zone, weather conditions, etc).

District plan contact: Jon Lam, D-3 IM Coordinator (270)-392-8760 jon.lam@ky.gov

Contents

Segment	Page
WN9007 0 - 2 MM.....	3
WN9007 2 - 6 MM.....	4
WN9007 6-7 MM.....	5
WN9007 7-9 MM.....	6
WN9007 9-26 MM.....	7
WN9007 26-27 MM.....	8
WN9007 27-34 MM.....	9
WN9007 34-43	10
Exit Diversion Setup - 2 lanes to Exit	12
Exit Diversion Setup - 3 lanes to Exit.....	13

NATCHER PARKWAY DETOUR ROUTE 0 MM - EXIT 2 WARREN COUNTY



KYTC Incident Contact 24/7:
TOC (502)-564-2080

KSP Post 3 270-782-2010
Local Police (BGPD) 270-393-4000
(WCSO) 270-842-1633
EMA 270-842-1633

NB
↑
>US231 N to I-65 SB
>Left onto I-65 SB
>Exit 20B onto Natcher Pkwy
NB @ 2 mm

SB
↓
>Ex 2A to I-65 NB
>Ex 22 to US231 S
>Right on US231 S to intersec-
tion of US231 & Natcher Pkwy

SB: Divert SB WNP off @ Ex 2B, traffic loop back to I-65 NB to Ex 22 detour.

NB: Close entrance to NB Natcher @ US231 or at KY622 depending on incident location N or S of KY622

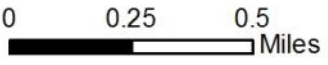
NB: Close NB Ex 22A amp from I-65NB

SB: DMS @ WN9007 SB 6 MM
CRASH AHEAD 2 MM LANES BLOCKED
DETOUR BY I-65 N TO US231 S

NB: DMS @ I-65 17 NB & 32 SB
CRASH NATCHER PKWY SOUTH BLOCKED
SOUTH BOUND DETOUR EXIT 22

Legend

- Closed
- Detour
- Closure Point
- Detour Sign to Deploy
- Diversion
- Significant Traffic Signals



NATCHER PARKWAY DETOUR ROUTE EXIT 2 - EXIT 6 WARREN COUNTY



KYTC Incident Contact 24/7:
TOC (502)-564-2080

KSP Post 3 270-782-2010
Local Police (BGPD) 270-393-4000
(wco) 270-842-1633
EMA 270-842-1633

SB: Divert SB off @ Ex 6

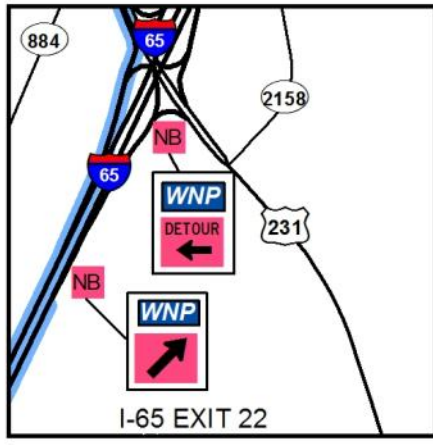
SB: Close SB ramp from 31W

NB
↑

- >Exit 2A to I-65 N
- >Ex 22 to US231
- >Left on US231 N Scottsville Rd
- >Left on US231 N Campbell Ln
- >Left on US31W S Nashville Rd
- >Return to Natcher Pkwy @ 6 mm

SB
↓

- >Ex 6 to US31W
- >Left on US31W N
- >Right on US231 S Campbell Ln
- >Right on US231 S Scottsville Rd
- >Right on I-65 SB
- >Exit 20A to return to Natcher SB



Legend

- Closed
- Detour
- Closure Point
- Detour Sign to Deploy
- Diversion
- Significant Traffic Signals

NB: DMS @ I-65 17 NB & 32 SB

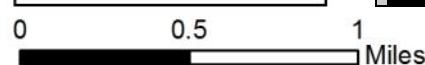
CRASH
NATCHER PKWY
NORTH BLOCKED

NORTHBOUND
DETOUR
EXIT 22

SB: Close SB Ex ramp 20B

NB: Divert NB off @ Ex 2A

NB: Close NB Ex ramp 20B



NATCHER PARKWAY DETOUR ROUTE EXIT 6 - EXIT 7 WARREN COUNTY



KYTC Incident Contact 24/7:
TOC (502)-564-2080

KSP Post 3 270-782-2010
Local Police (BGPD) 270-393-4000
(wcso) 270-842-1633
EMA 270-842-1633

- | | |
|----------------|---|
| NB
↑ | >Ex 6 to US31W
>Right on US31W N
>Left on US231 N Veterans Mem.
>Left on US 68 S Russellville Rd
>Return to Natcher Pkwy @ 7 mm |
| SB
↓ | >Ex 7 to US68 E
>Left on US68 E Russellville Rd
>Right on US231 S Veterans Mem.
>Right on US31W S Nashville Rd
>Return to Natcher Pkwy @ 6 mm |

SB: Divert SB off @ Ex 7

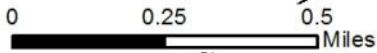
SB: Close SB ramp from US68

NB: Close NB ramp from 31W

NB: Divert NB off @ Ex 6

Legend

- Closed
- Detour
- Closure Point
- Detour Sign to Deploy
- Diversion
- Significant Traffic Signals



NATCHER PARKWAY DETOUR ROUTE EXIT 7 - EXIT 9 WARREN COUNTY



SB: Close SB ramp from US231

SB: Divert SB off @ Ex 9



KYTC Incident Contact 24/7:
TOC (502)-564-2080

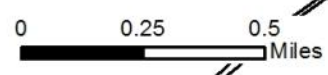
KSP Post 3 270-782-2010
Local Police (BGPD) 270-393-4000
(wcco) 270-842-1633
EMA 270- 842-1633

NB
↑
>Exit 7 to US68 E Russellville Rd
>Left on US68E/US231S Veterans Mem.
>Left on US231 N Morgantown Rd
>Return to Natcher Pkwy @ 9 mm

SB
↓
>Ex 9 to US231 S
>Right on US231 S Morgantown Rd
>Right on US68W/US231S Veterans Mem.
>Right on US68 W
>Return to Natcher Pkwy @ 7 mm

Legend

- Closed
- Detour
- Closure Point
- Detour Sign to Deploy
- Diversion
- Significant Traffic Signals



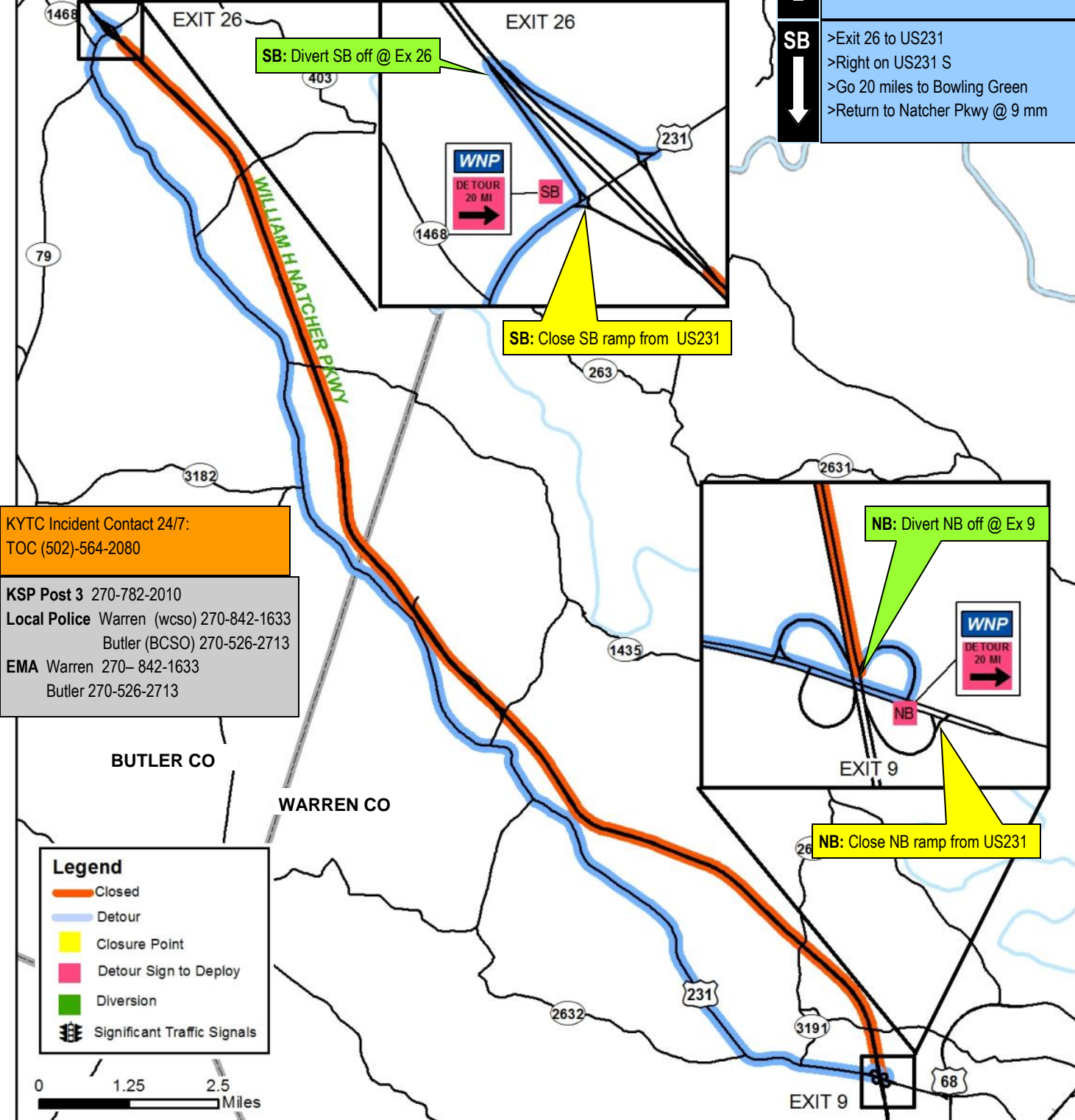
NB: Close NB ramp from US68

NB: Divert NB off @ Ex 7

NATCHER PARKWAY DETOUR ROUTE EXIT 9 - EXIT 26 BUTLER COUNTY WARREN COUNTY



- NB** (Northbound):
 - >Exit 9 to US231
 - >Right on US231 N
 - >Go 20 miles to Morgantown
 - >Return to Natcher Pkwy @ 26 mm
- SB** (Southbound):
 - >Exit 26 to US231
 - >Right on US231 S
 - >Go 20 miles to Bowling Green
 - >Return to Natcher Pkwy @ 9 mm

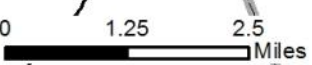


KYTC Incident Contact 24/7:
TOC (502)-564-2080

KSP Post 3 270-782-2010
Local Police Warren (wcso) 270-842-1633
 Butler (BCSO) 270-526-2713
EMA Warren 270-842-1633
 Butler 270-526-2713

Legend

- Closed
- Detour
- Closure Point
- Detour Sign to Deploy
- Diversion
- Significant Traffic Signals



NATCHER PARKWAY DETOUR ROUTE EXIT 26 - EXIT 27 BUTLER COUNTY



KYTC Incident Contact 24/7:
TOC (502)-564-2080

KSP Post 3 270-782-2010
Local Police (BCSO) 270-526-2713
EMA 270-526-2713

SB: Divert SB off @ Ex 27



SB: Close SB ramp from KY70

- | | |
|----------------|--|
| NB
↑ | <ul style="list-style-type: none"> >Exit 26 to US231 >Left on US231 S to KY1468 >Right on KY1468, to end >Right on KY70 E >Return to Natcher Pkwy @ 27 mm |
| SB
↓ | <ul style="list-style-type: none"> >Exit 27 to KY70 >Right on KY70 W to KY1468 >Left on KY1468, go to end >Left on US231 N >Return to Natcher Pkwy @ 26 mm |

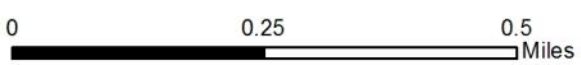


NB: Close NB ramp from US231

NB: Divert NB off @ Ex 26

Legend

- Closed
- Detour
- Closure Point
- Detour Sign to Deploy
- Diversion
- Significant Traffic Signals



NATCHER PARKWAY DETOUR ROUTE EXIT 27 - EXIT 34 BUTLER COUNTY



SB: Close SB ramp from US231

SB: Divert SB off @ Ex 34

NB: Close NB ramp from KY70

NB: Divert NB off @ Ex 27



KYTC Incident Contact 24/7:
TOC (502)-564-2080

KSP Post 3 270-782-2010
Local Police (BCSO) 270-526-2713
EMA 270-526-2713

NB
 ↑

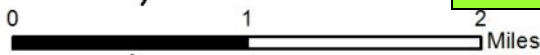
- >Exit 27 to KY70 E
- >Right on KY70 E
- >Left on US231 N
- >Follow US231 N for 8.9 mi
- >Return to Natcher Pkwy @ 34 mm

SB
 ↓

- >Exit 34 to US231
- >Right on US231 S
- >Follow US231 S for 8.9 mi
- >Right on KY70 W
- >Return to Natcher Pkwy @ 27 mm

Legend

- Closed
- Detour
- Closure Point
- Detour Sign to Deploy
- Diversion
- Significant Traffic Signals



NATCHER PARKWAY DETOUR ROUTE EXIT 34 - EXIT 43B BUTLER COUNTY OHIO COUNTY



WESTERN KY PARKWAY

WILLIAM H NATCHER PKWY NC

SB: D-2 Divert SB off @ Ex 43B

EXIT 43B

2712

SB: D-2 Close WK WB Ex 77A



SB: D-2 Close WK EB Ex 77A

EXIT 75

NB ↑	.Exit 34 to US231 >Right on US231 N >Go 9.8 mi on US231 N >Right to enter Western Ky Pkwy E >WKP Exit 77B to Natcher Pkwy NB >Return to Natcher Pkwy @ 44 mm
	SB ↓
	>Exit 43B to Western Ky Pkwy W >Exit 75 to US231 >Left on US231 S >Go 9.8 mi on US231 S >Return to Natcher Pkwy @ 34 mm

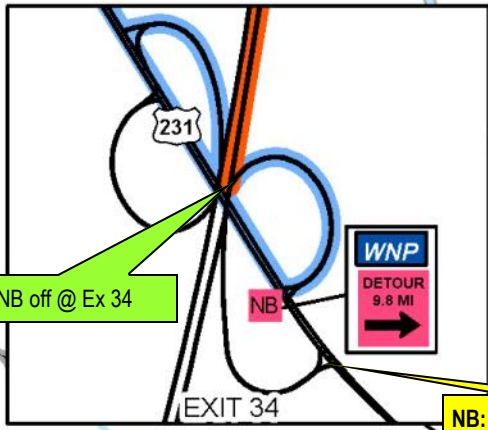
KYTC Incident Contact 24/7:
TOC (502)-564-2080

KSP Post 3 (Butler Co) 270-782-2010
Post 16 (Ohio Co) 270-826-3312
Local Police - Butler Co 270-526-2713
Ohio Co 270-298-4411
EMA - Butler Co 270-526-2713
Ohio Co 270-298-4411

Legend

- Closed
- Detour
- Closure Point
- Detour Sign to Deploy
- Diversion
- Significant Traffic Signals

0 0.5 1 Miles



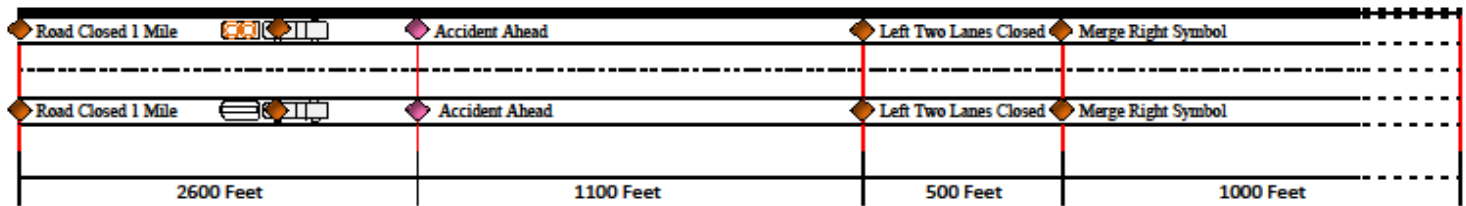
NB: Close NB ramp from US231

Diversion Setup - 2 Lanes to Exit

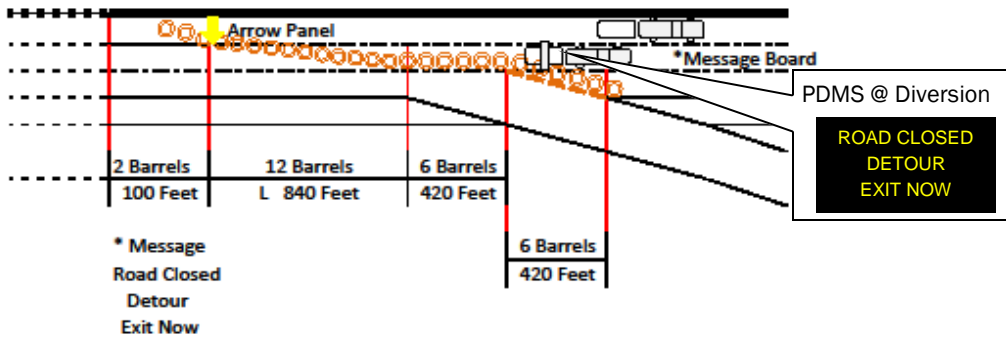
No personnel should be posted on foot within the traveled way of this setup.

Any personnel that are assigned to assist motorists with directions or questions should be posted at the exit end of the ramp. Personnel should make any contact with motorists as brief as possible to maintain flow of traffic off ramps. Detour routes have been signed to minimize need for directions.

Single Lane Closure with Exit Detour



# Signs		Barrel Spacing	
Road Closed 1 Mile	2	Tapers	1 X Speed Limit
Accident Ahead	2	Tangents	2 x Speed limit
Left two lanes Closed	2		"two skips between each barrel"
Merge Right Symbol	2		



Entrance Ramp / Access Closure

Type III barricades with "ROAD CLOSED" sign shall be used to close access and should be placed at the entry end of the ramp.

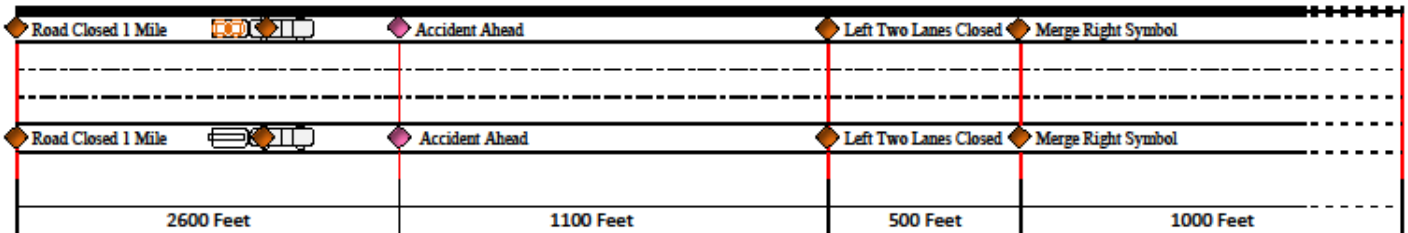
Any dedicated left turn lanes to the ramp should be closed with channelizers and if available a "RAMP CLOSED" sign may be placed in the closed turn lane.

Diversion Setup - 3 Lanes to Exit

No personnel should be posted on foot within the traveled way of this setup.

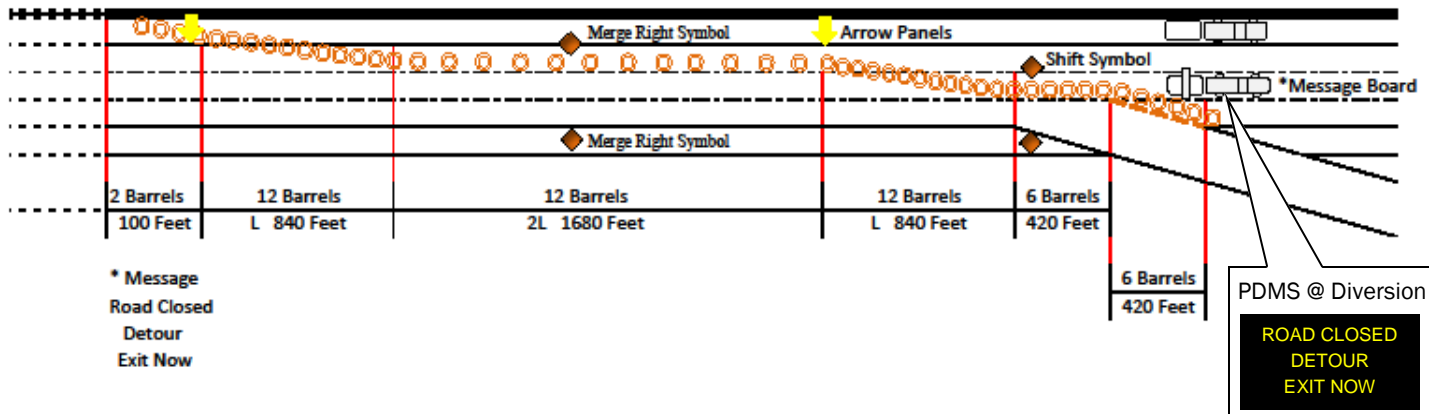
Any personnel that are assigned to assist motorists with directions or questions should be posted at the exit end of the ramp. Personnel should make any contact with motorists as brief as possible to maintain flow of traffic off ramps. Detour routes have been signed to minimize need for directions.

Two Lane Closure with Exit Detour



# Signs	
Road Closed 1 Mile	2
Accident Ahead	2
Left two lanes Closed	2
Merge Right Symbol	4

Barrel Spacing	
Tapers	1 X Speed Limit
Tangents	2 x Speed limit "two skips between each barrel"



Entrance Ramp / Access Closure

Type III barricades with "ROAD CLOSED" sign shall be used to close access and should be placed at the entry end of the ramp.

Any dedicated left turn lanes to the ramp should be closed with channelizers and if available a "RAMP CLOSED" sign may be placed in the closed turn lane.

